

Angela Llanas
Libby Williams
Lorena Peimbert

Happy Campers 2

Second Edition

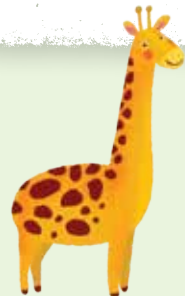
Student's
Book



Unit 5

Animals

26 Listen. Then echo.



giraffe



crocodile



elephant



lion



hippo



bat



sloth



monkey

27 Listen and number.

In the Jungle

Out in the jungle,
Looking at me!
What can it be?
What can it be?
It doesn't have
small teeth.
I can see.
It has big teeth!
And it's looking
at me.
It's a lion.
Look and see!

They don't have
small eyes.
I can see.
They have big eyes!
And they're looking
at me.
They're giraffes.
Look and see!
It doesn't have
long legs.
I can see.
It has short legs!

And it's
looking at me.
It's a hippo.
Look and see!
It doesn't have
small ears.
I can see.
It has big ears!
And it's looking
at me.
It's an elephant.
Look and see!



27 Sing: In the Jungle.

Focus

An elephant **has** big ears.
It **doesn't have** small ears.

Elephants **have** big ears.
They **don't have** small ears.

1 Read and complete.

a) Hippos have short legs.

b) Lions have big teeth.

A hippo _____
long legs.

A lion _____ big teeth.

c) Giraffes don't have big ears.

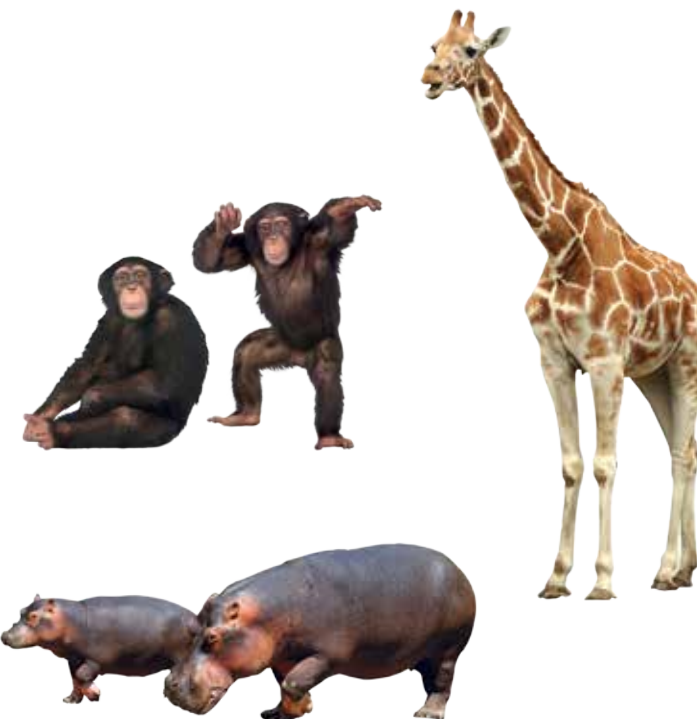
They _____ small ears.

2 Underline. Then match.

a) It / They has long legs.

b) It / They have short legs.

c) It / They have two arms.



3 Point and say.

A giraffe has four legs. It doesn't have two legs.



Crocodiles have big teeth. They don't have small teeth.



1 Read and listen.

Look! Are they African elephants?

No, they aren't. They're Asian elephants.

They have small ears. African elephants have really big ears.

Wow! Is a hippo fat?

Yes! James, is it slow?

Hippos have short legs, but they aren't slow. They're fast!

2 Find and complete. Then listen and say.

a) f _____ and t _____

b) b _____ and s _____

c) f _____ and s _____

Watch the video.

1 Listen again.

Baby crocodiles have lots of teeth. Are they big teeth?

No, they aren't. But big crocodiles have big teeth!

Oh, no! Look at your photo, Alex. The giraffe doesn't have a head!

Sorry! Giraffes are very tall and thin. And they have long legs!

2 Match to make questions.

- a) Is it
- b) Are they
- 1) African elephants?
- 2) a slow animal?

3 Unscramble.

- a) monkeys / Are / thin
- b) slow / lions / Are

_____ ? _____ ?

4 Ask and answer.

Is it fast?

Yes, it is!

**1** Read and listen.**Bat Facts**

Look at this animal. Is it a bird?

No, it isn't. It's a bat. Bats aren't birds.

But they have wings like birds.



There are many different kinds of bats. They sleep in the day and eat at night.

Bats listen to find their food.

What foods do they like? Some bats like bugs.

Fruit bats like fruit. This is a fruit bat.



Bats are small. They have small teeth and small eyes. They don't see very well. Bats are very interesting!

**2** Listen and echo.
Circle the words with a long *i* sound in the text.**Phonics**

like night
find kinds

**1** Listen again to *Bat Facts*.**2** Circle.

- | | | |
|---------------------------------|------|--------------|
| a) Bats are birds. | True | False |
| b) Bats sleep in the day. | True | False |
| c) Fruit bats don't like fruit. | True | False |
| d) Bats see very well. | True | False |
| e) Bats listen to find food. | True | False |

3 Complete.

are

aren't

don't have

have

- a) Bats _____ birds.
- b) Bats _____ wings.
- c) Bats _____ very interesting.
- d) Bats _____ four eyes.





Wild Animals

1 Read.

Look! It's a sloth!
Sloths have a lot of hair!
They live in trees.
They eat plants and fruits.

Are they fast? No, they aren't fast.
They are very slow. Trees keep them safe from other animals.



2 Ask and answer.

- a) Is it a monkey?
_____.
- b) Are sloths fast?
_____.
- c) What do they eat?
_____.

3 Make a poster about a wild animal.



1 Complete. Then match.

- a) s l o t h _____
- b) l _____
- c) g _____
- d) m _____
- e) h _____



0 / 4



2 Complete.

- a) Are elephants small ?
No, _____. They're big.
- b) A sloth _____ slow.
- c) _____ a bat _____ ?
No, _____. It's small.
- d) Giraffes _____ legs.
They _____ fat legs.

0 / 6

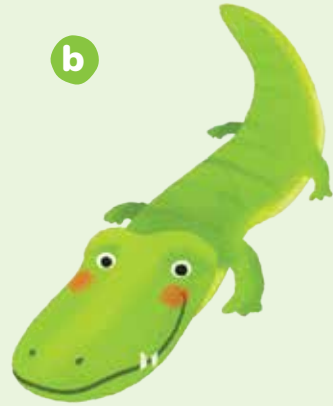


1 Write.

a



b



c



d



e



f



g



h



Reminder

An elephant has big ears.
It doesn't have small ears.

Elephants have big ears.
They don't have small ears.

1 Underline.

a) A hippo has / doesn't have hands.
It has / doesn't have four legs.



b) Sloths have / don't have feet.
They have / don't have six eyes.



c) A bat has / doesn't have three legs.
It has / doesn't have ears.



2 Complete.

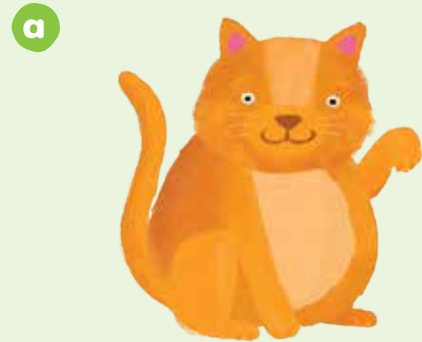
a) A monkey _____ arms.
It _____ small ears.



b) Crocodiles _____ teeth.
They _____ hair.



1 Match.



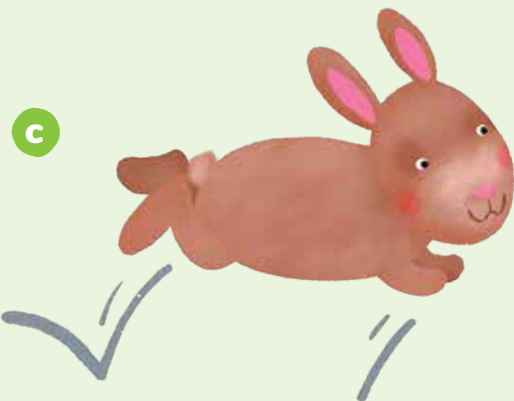
It's thin.

It's fat.



It's big.

It's small.



It's slow.

It's fast.



Reminder

Is it fast? Yes, it is.
Are they big? No, they aren't.

1 Complete and match.

a) Is it short?

No, it isn't.

b) _____ fat?

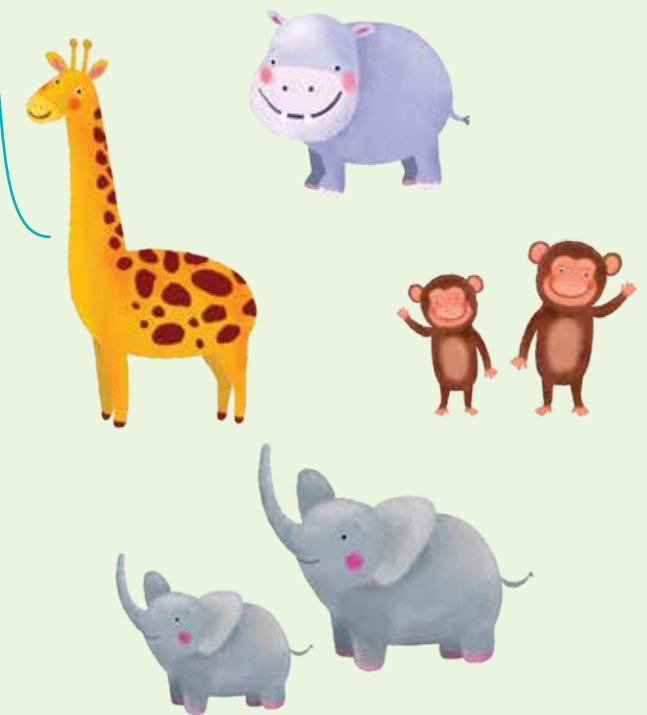
Yes, it is.

c) _____ small?

No, they aren't.

d) _____ thin?

Yes, they are.



2 Answer.

a) Is it tall? No, it isn't.



b) Are they big? _____, _____.



c) Is it slow? _____, _____.

d) Are they fast? _____, _____.

