

NEXT STATION

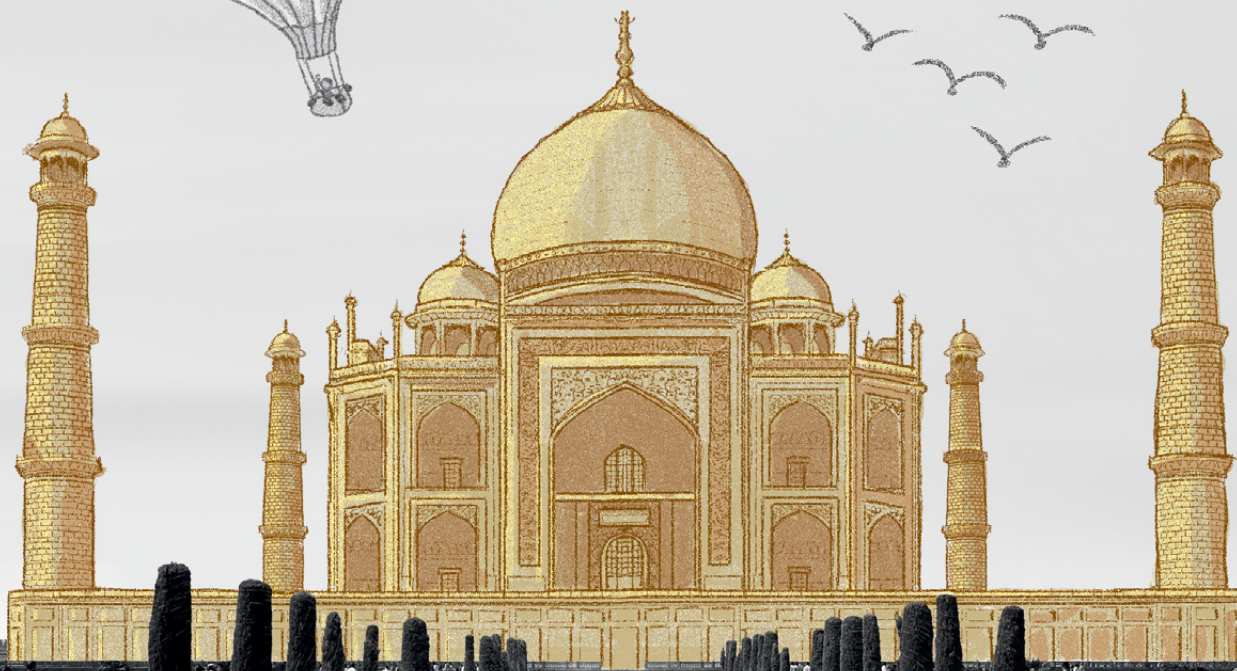
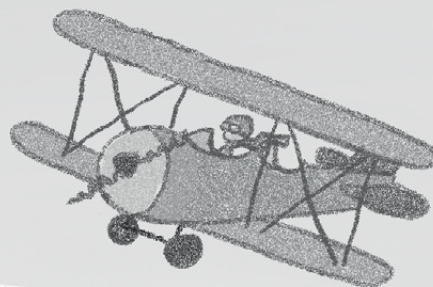


WORKBOOK

2nd Edition

Amanda Cant / Mary Charrington

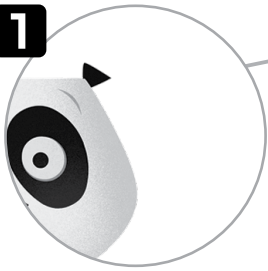
Thelma de Carvalho Guimarães / Denise Santos



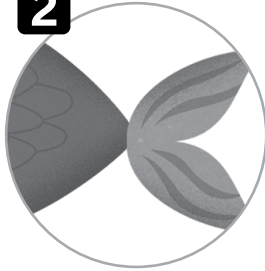


1 Connect the pictures and words.

1



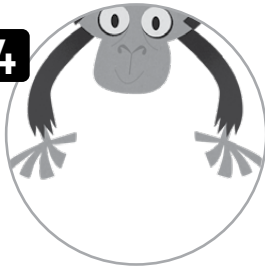
2



3



4



5



6



a elephant

b octopus

c fish

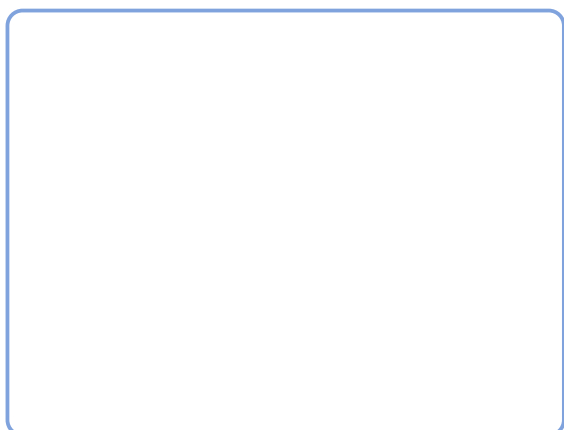
d monkey

e panda

f tiger

2 Circle the words. Then draw the missing animal from Activity 1.

monkey tiger fish elephant panda



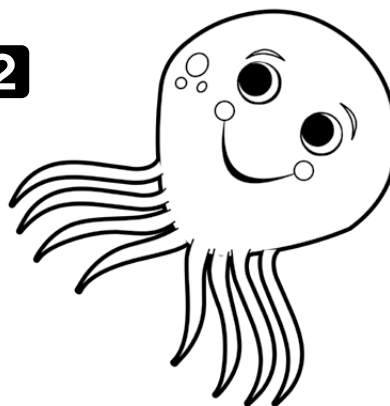


1 Circle a or an.



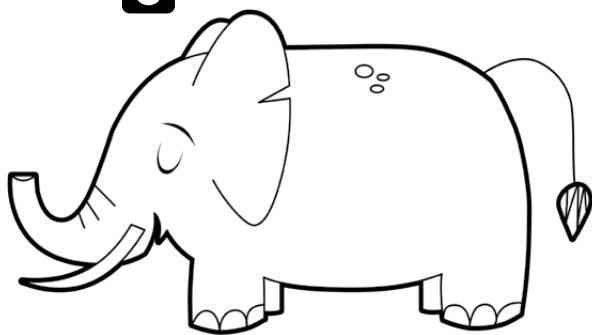
It's a / an panda.

2



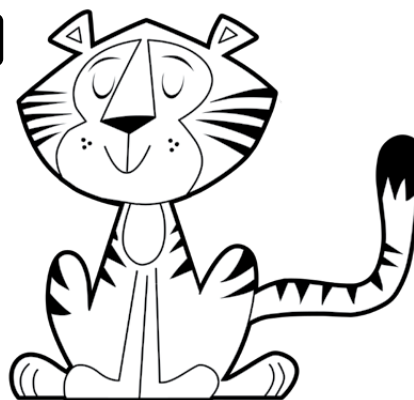
It's a / an octopus.

3



It's a / an elephant.

4



It's a / an tiger.

2 Read. Then find and color the animals in Activity 1.

1 What is it?
elephant.
use it.

2 What is it?
tiger.
use it.

1 Read. Then underline u, c, m, and d.



This is Sandy and her mom.



This is a hut.



And this is a cat.

2 Write *u*, *c*, *m*, or *d*.



1 This is San____y.



2 This is her ____o____.



3 This is a h____t.



4 This is a ____at.

**1** Circle the correct options.**1**

/



gives Ma Liang a magic brush.

And old man The Emperor

2 Ma Liang paints

/



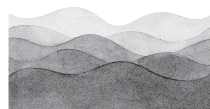
for the poor people.

gold

food

3 The Emperor orders Ma Liang to paint

/

a mountain
of gold

a sea

4 In the end,

/



is happy in his village.

The Emperor

Ma Liang

1 Find and circle the words.

1



r o d o o r o d

2



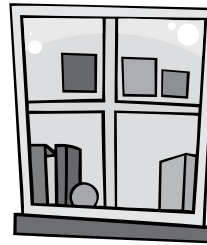
c l p e n c i l n e s e c a s e s c

3



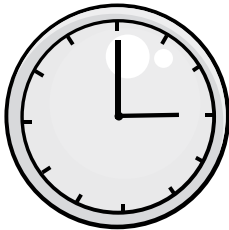
s k e d e s k e

4



w n w i n d o w d w

5



k c l o c k o k

6



r d a b o a r d r







2 Listen, read, and connect in the correct order.

Stand up,
please.And walk
to the door.Now walk to
the window,Turn
around.And walk to
the board.Wave to
your friends,Walk to
your desk,And please
sit down.



1 Connect. Then look and check (✓).

	Is	it	a pencil case?	1 Yes, it is. <input type="checkbox"/>
				No, it isn't. <input type="checkbox"/>
	Is	it	a window?	2 Yes, it is. <input type="checkbox"/>
				No, it isn't. <input type="checkbox"/>
	Is	it	a clock?	3 Yes, it is. <input type="checkbox"/>
				No, it isn't. <input type="checkbox"/>
	Is	it	a door?	4 Yes, it is. <input checked="" type="checkbox"/>
				No, it isn't. <input type="checkbox"/>

2 Connect the dots. Then read and circle.



Is it a board? Yes, it is. / No, it isn't.

UNIT 2 LESSONS 7 AND 8

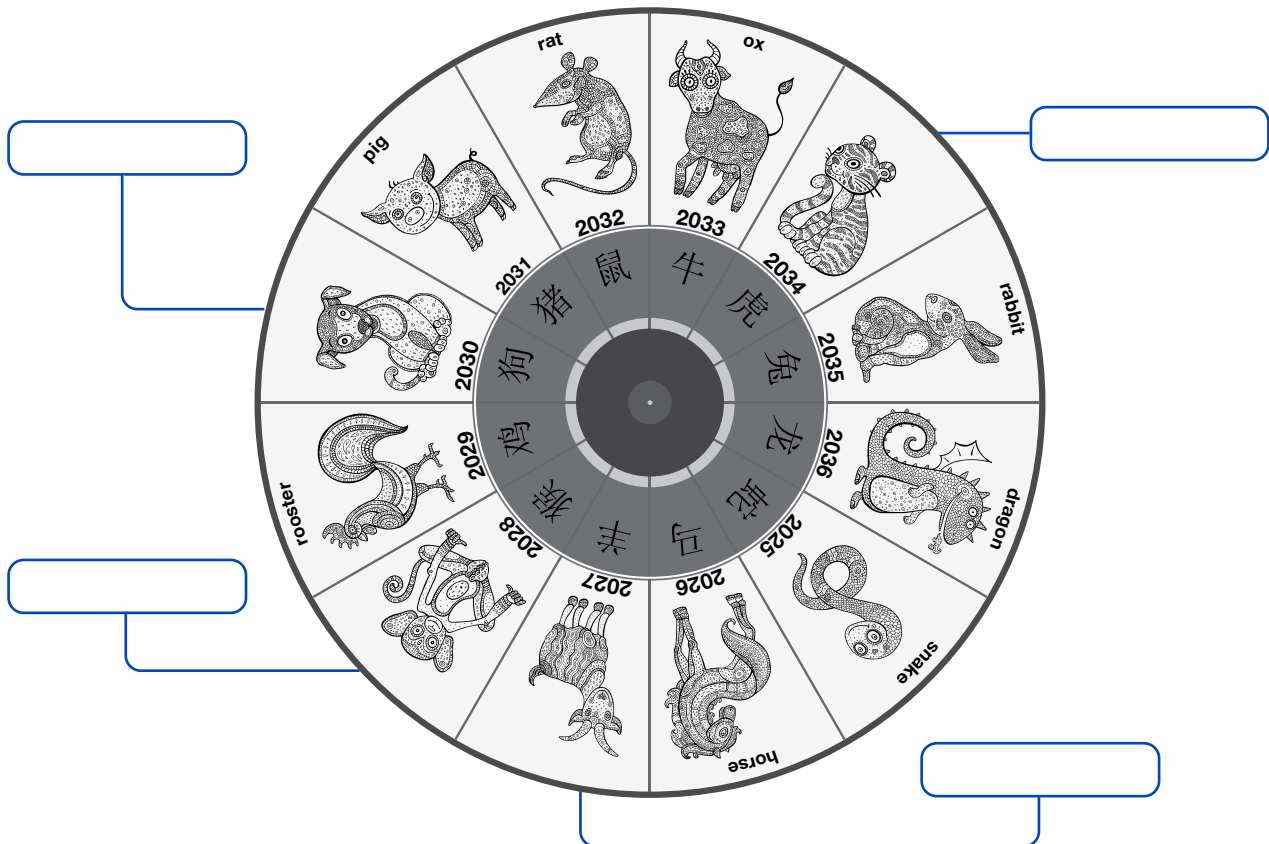
Let's Visit



1 Read and complete the calendar.

On the Chinese calendar each year is represented by an animal.

dog goat monkey tiger



2 Unscramble the words. Then connect the questions and answers.

it? is What



It's an envelope with money.

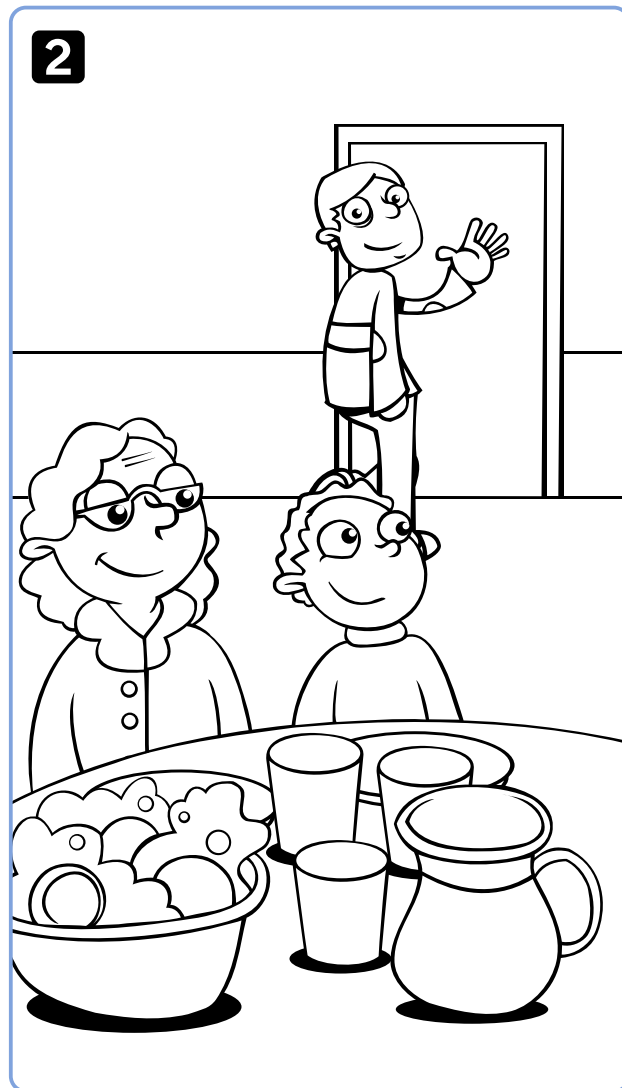
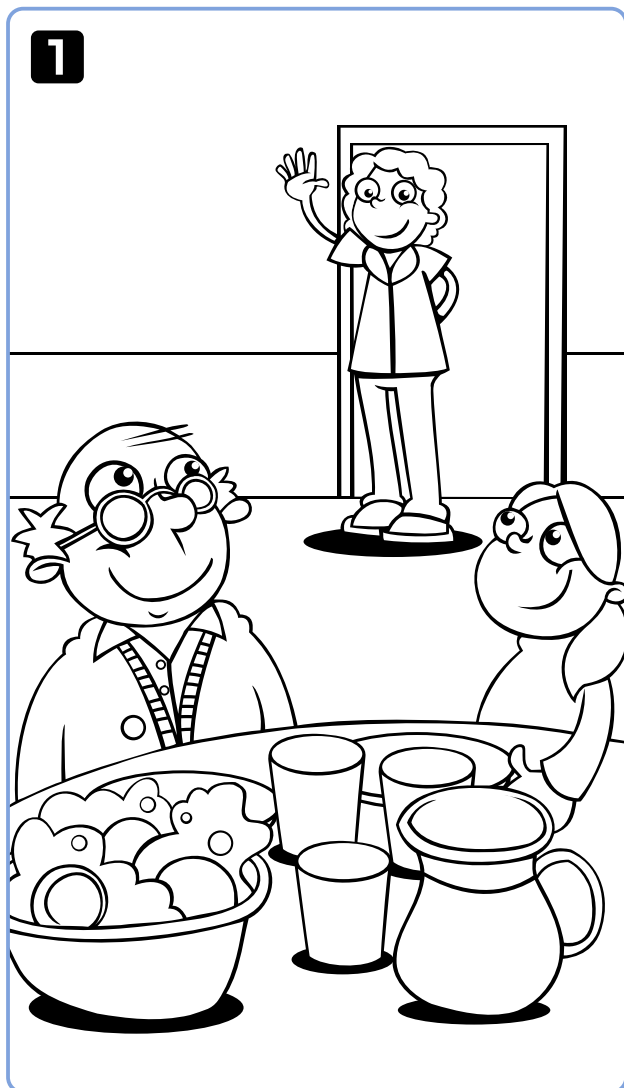
it Is octopus? an



No, it isn't. It's a dancing dragon.



Look at the pictures and check (✓).



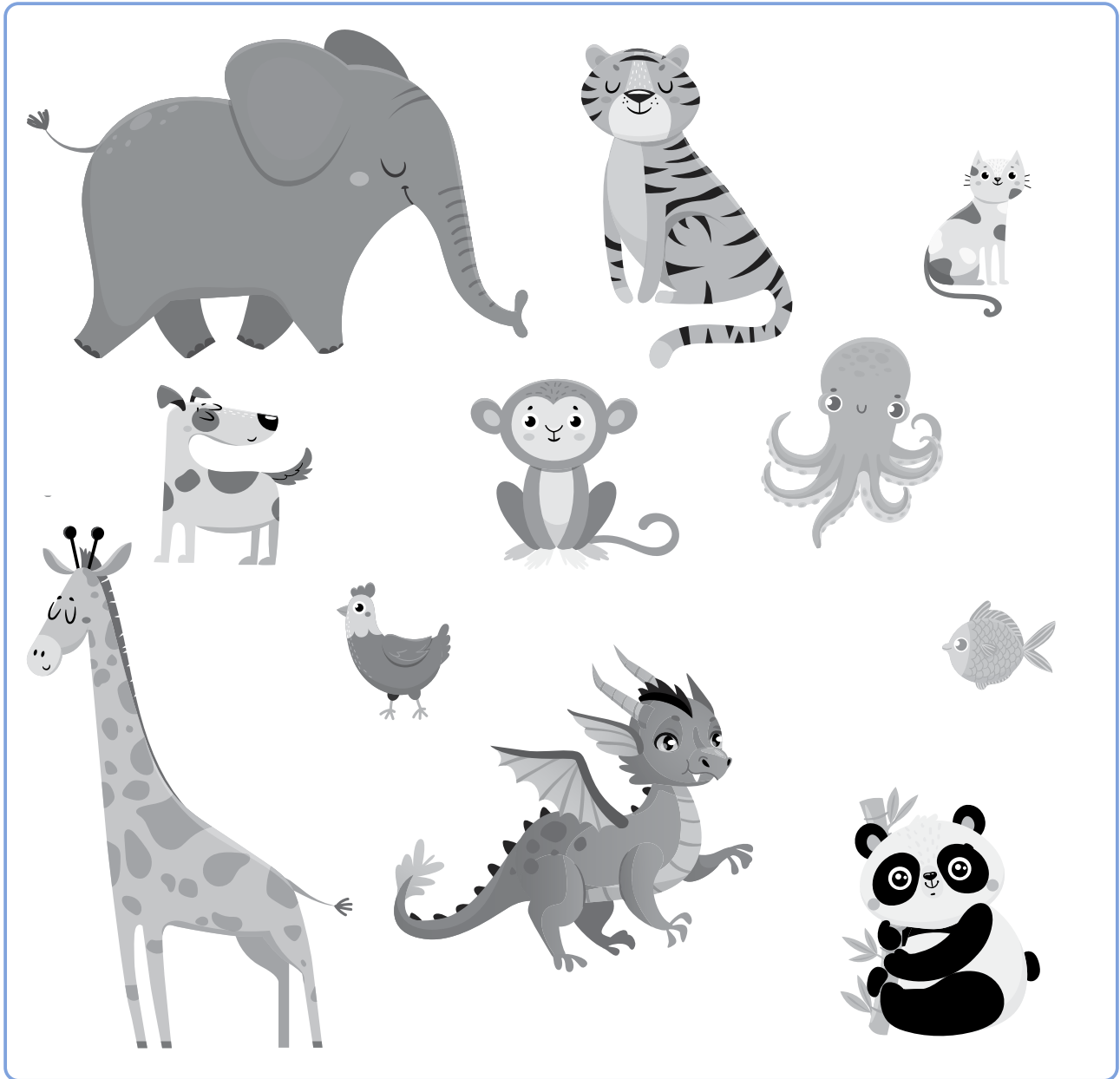
	1	2
a brother	<input type="checkbox"/>	<input checked="" type="checkbox"/>
b sister	<input type="checkbox"/>	<input type="checkbox"/>
c grandma	<input type="checkbox"/>	<input type="checkbox"/>
d grandpa	<input type="checkbox"/>	<input type="checkbox"/>

	1	2
e mom	<input type="checkbox"/>	<input type="checkbox"/>
f dad	<input type="checkbox"/>	<input type="checkbox"/>
g Hello!	<input type="checkbox"/>	<input type="checkbox"/>
h Goodbye!	<input type="checkbox"/>	<input type="checkbox"/>



UNIT 2 PLAY TIME

Look and check (✓) the animals in the picture.



elephant

☒

dragon

☐

fish

☐

shark

☐

tiger

☐

octopus

☐

monkey

☐

cat

☐

panda

☐

dog

☐

giraffe

☐

hen

☐