

NEXT STATION



CLIL BOOK

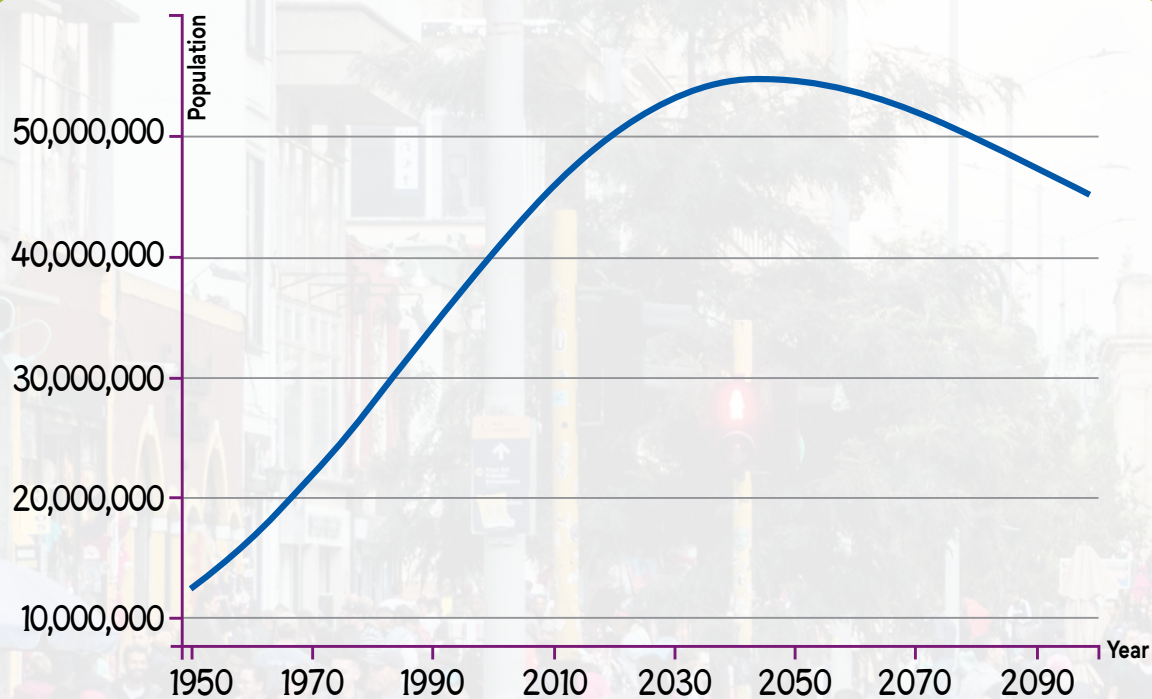
Ana Elisa Martins

2nd Edition



UNIT 7

GRAPHS



Graph based on: <http://worldpopulationreview.com/countries/colombia-population/>. Accessed on: March 15, 2024.



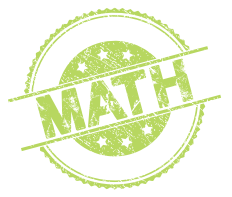
This graph represents the population growth in Colombia, South America.

What's the population of your country?

100M
IN

Look at the picture.

Is the population going to increase or decrease after 2050?

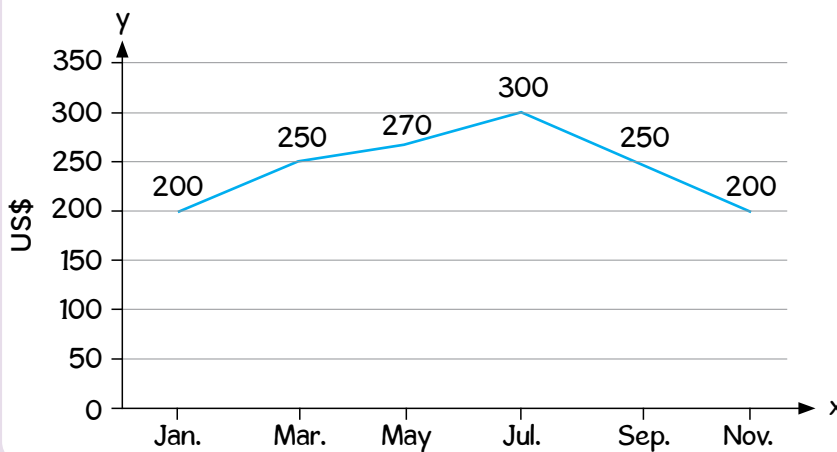


1 Listen and read.

Line Graphs

Line graphs show connected information that is measured using **quantities**. For example, it can show how a certain thing changes over time. If these changes form a **pattern**, we call it a **trend**. The information provided by the numbers is called **data**. A line graph is made up of a horizontal x-axis and a vertical y-axis with a line that connects data points.

Tina's savings in 2019

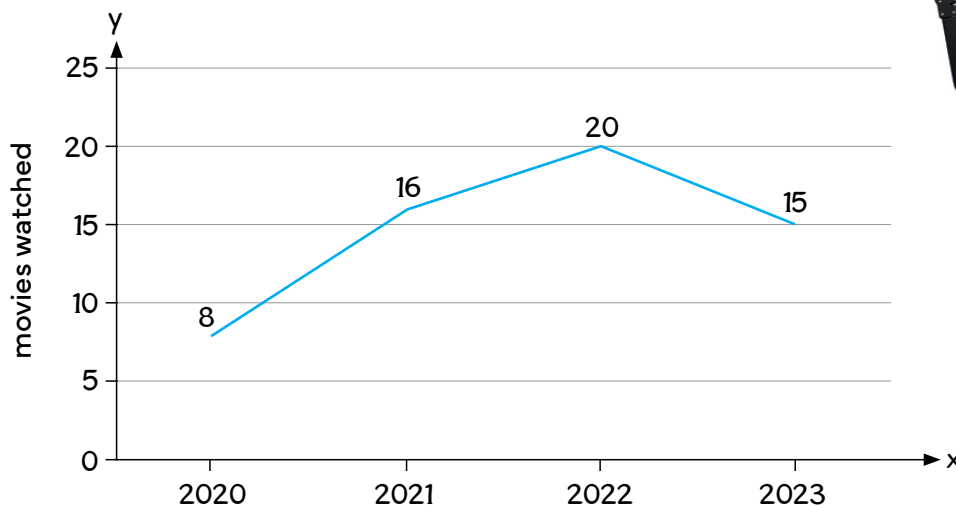


This line graph shows the changes in the data over time.



2 Look at the graph below. Write three sentences about Tina's movie habits over the years.

Tina's movie habits

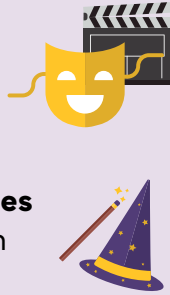




3 Listen and read.

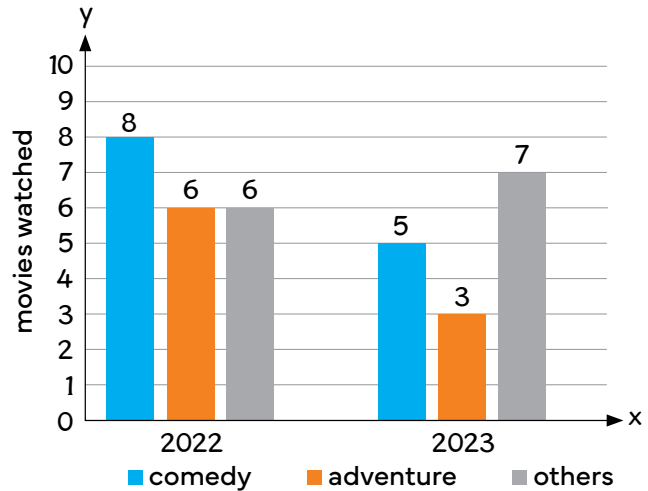
Bar Graphs

Bar graphs show data using **bars** of different heights. These bars are proportional to the **values** they **represent**. They can be vertical or horizontal.



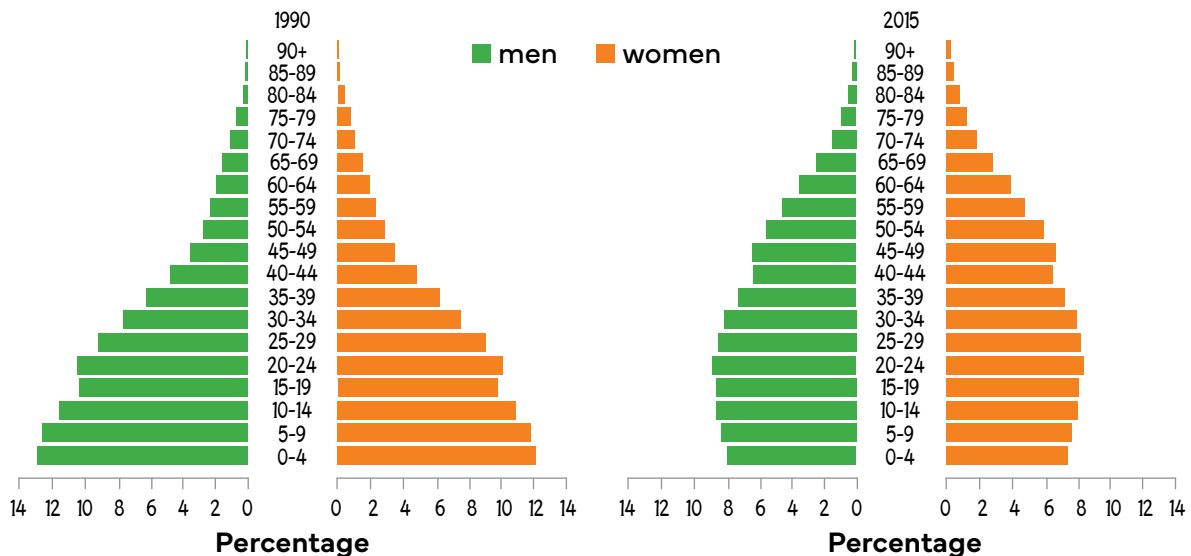
This bar graph shows how three different data sets (comedy, adventure, and other movies watched) vary over time.

Tina's movie habits by genre



4 Observe the graphs below. Write *T* (true) or *F* (false).

Population structure, by age and sex – Colombia, 1990 and 2015

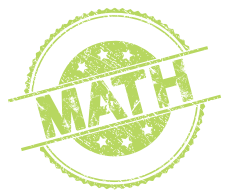


Based on: <https://iris.paho.org/bitstream/handle/10665.2/34322/9789275319666_spa.pdf?sequence=6&isAllowed=y>. Accessed on: March 15, 2024.

1 In the year 2015, more babies were born than in 1990. ☐

2 Life expectancy increased in Colombia over the years. ☐

Go back to the graphs and circle where you found the answers.



5 Represent the given information in a line graph.

apples sold at the school canteen				
Monday	Tuesday	Wednesday	Thursday	Friday
55	40	45	70	50



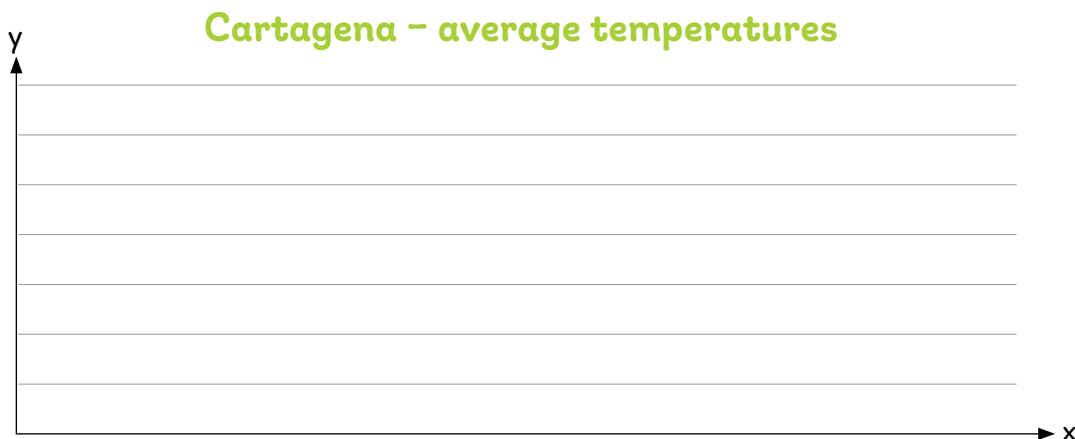
When do you think there is an apple promotion? Why?



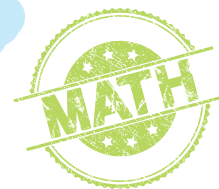
6 Represent the given information in a double bar graph.

Cartagena, Colombia – average temperatures												
	Jan.	Feb.	Mar.	Apr.	May	Jun.	Jul.	Aug.	Sep.	Oct.	Nov.	Dec.
min (°C)	24	24	25	26	26	26	26	26	26	25	25	25
max (°C)	31	31	31	31	32	32	32	32	32	31	31	31

Based on: <<https://www.climatestotravel.com/climate/colombia>>. Accessed on: March 15, 2024.



What is Cartagena's climate like?



7 Do a survey with your classmates. Follow the steps below.

1 Think of a question.

_____.

2 Think of some possible answers – maximum 4.

a _____

b _____

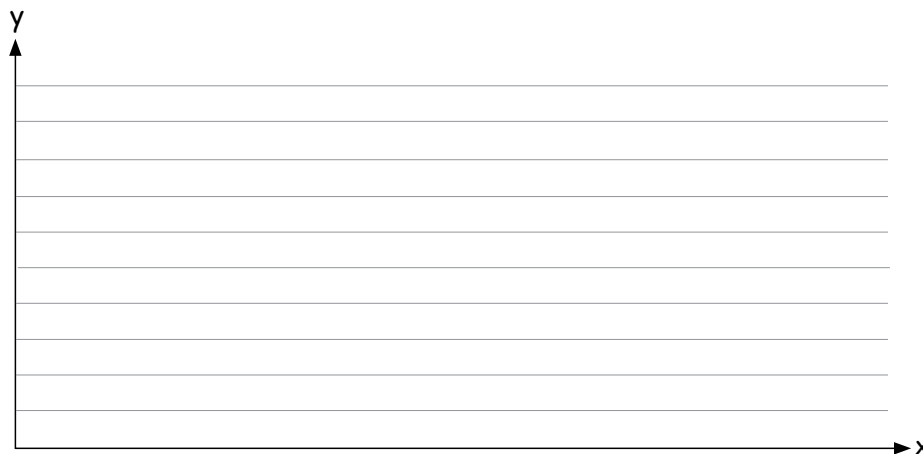
c _____

d _____

3 Make a chart with the collected data and tally up the results.

answers	tally

4 Create a graph.



5 Write a paragraph explaining the results of your survey.

